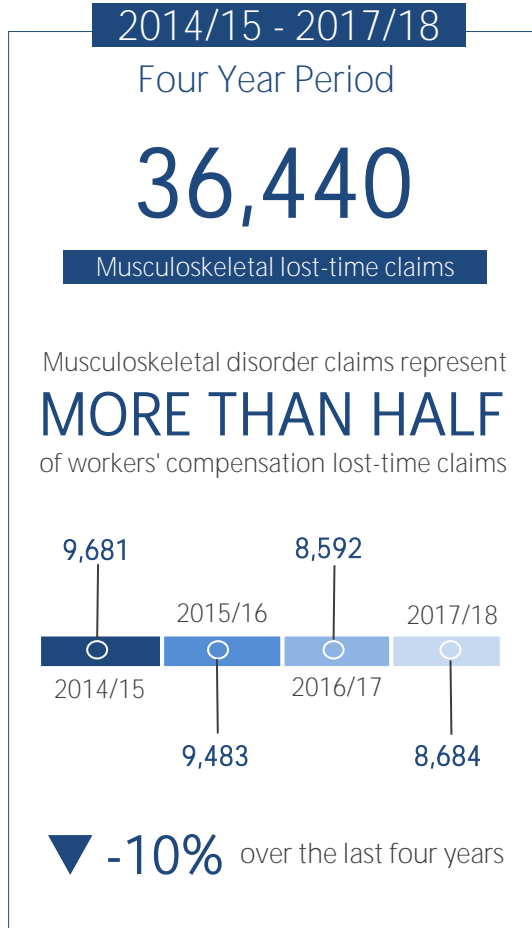


MUSCULOSKELETAL DISORDER CLAIMS

In this statistical note, Musculoskeletal Disorder claims (MSD) include traumatic joint/ligament and muscle/tendon injury and musculoskeletal and connective tissue diseases based on the national Type of Occurrence Classification System (TOOCS).

In the Western Australian workers' compensation scheme, the majority of claims are associated with MSDs. Although the number of MSDs shows a decreasing trend, they account for 56% of all lost-time claims over the last four years.



MAJORITY OF LOST-TIME CLAIMS ARE MUSCULOSKELETAL

15,913 lodged in 2017/18
Lost-time claims

8,684 lodged in 2017/18
MSD claims

18 average weeks lost
Weeks lost in 2017/18

Number of MSD claims



FREQUENCY RATE AND INCIDENCE RATE | 2013/14 - 2016/17*

Decreased from 4.8 to **4.3 claims** per million hours worked
▼ -11% Frequency rate

Decreased from 8.4 to **7.1 claims** per thousand workers
▼ -16% Incidence rate

1 out of **141** workers lodged a MSD claim in 2016/17



*The 2017/18 frequency rate and incidence rate were not available at the time of publication.

TOP THREE INDUSTRIES | 2017/18



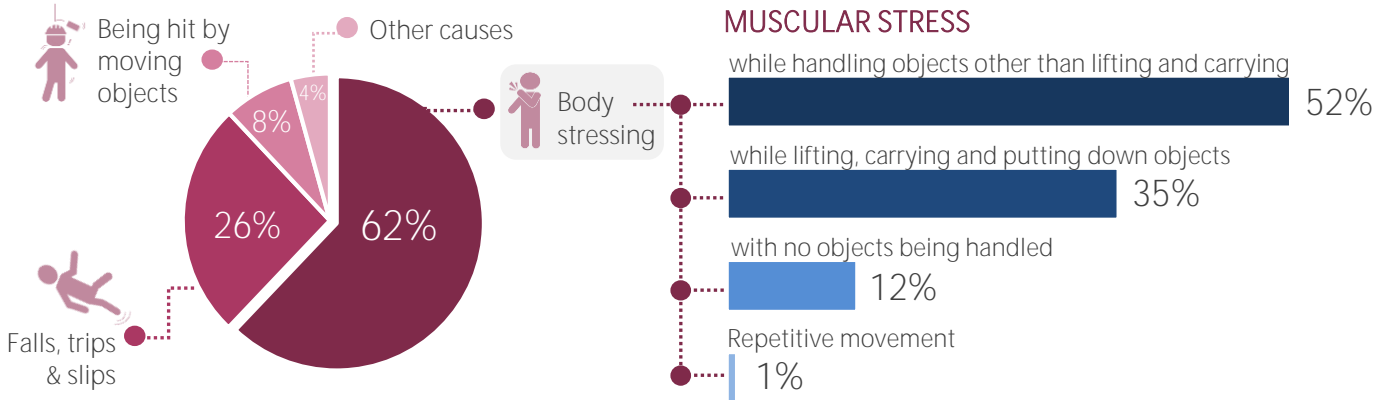
There were 2,335 lost-time claims lodged in the Health Care and Social Assistance industry in 2017/18



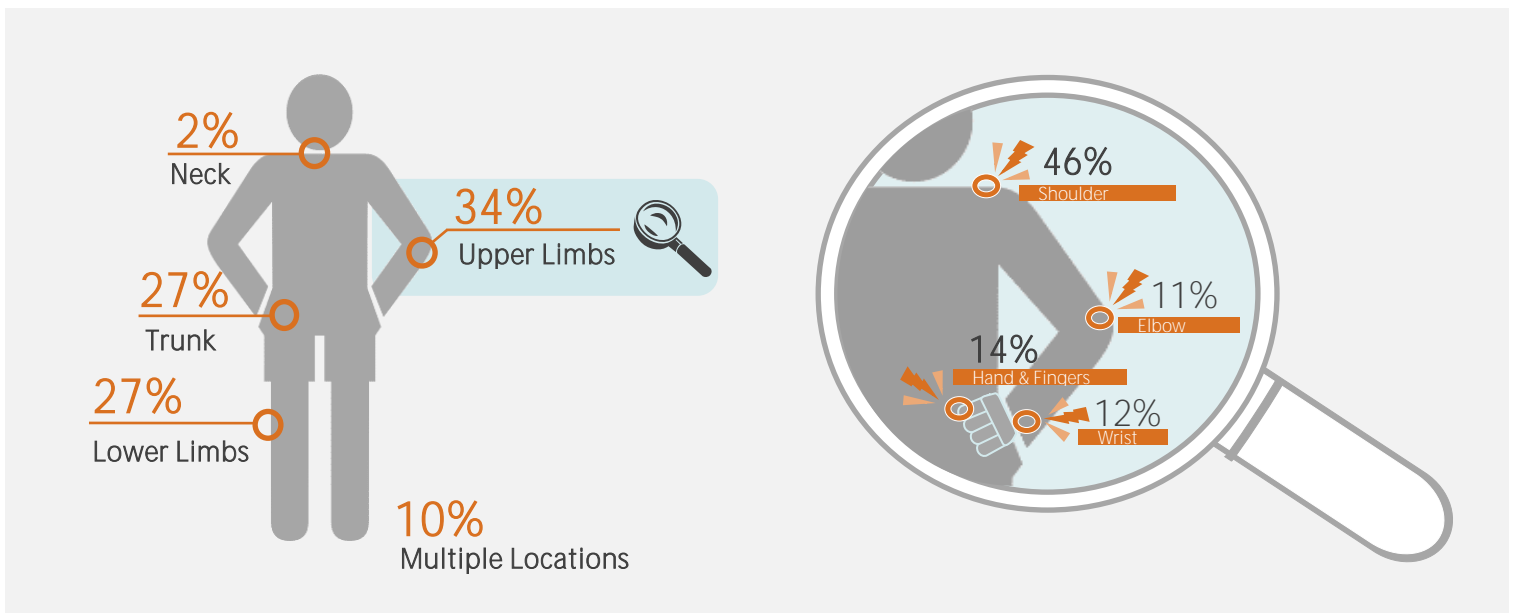
MSDs account for **two thirds** of these lost time claims.

MUSCULOSKELETAL DISORDER CLAIMS

CAUSES OF MUSCULOSKELETAL CLAIMS | 2017/18



BODILY LOCATION OF THE MUSCULOSKELETAL INJURIES | 2017/18



PROFILE OF MUSCULOSKELETAL DISORDERS CLAIMS | 2017/18

